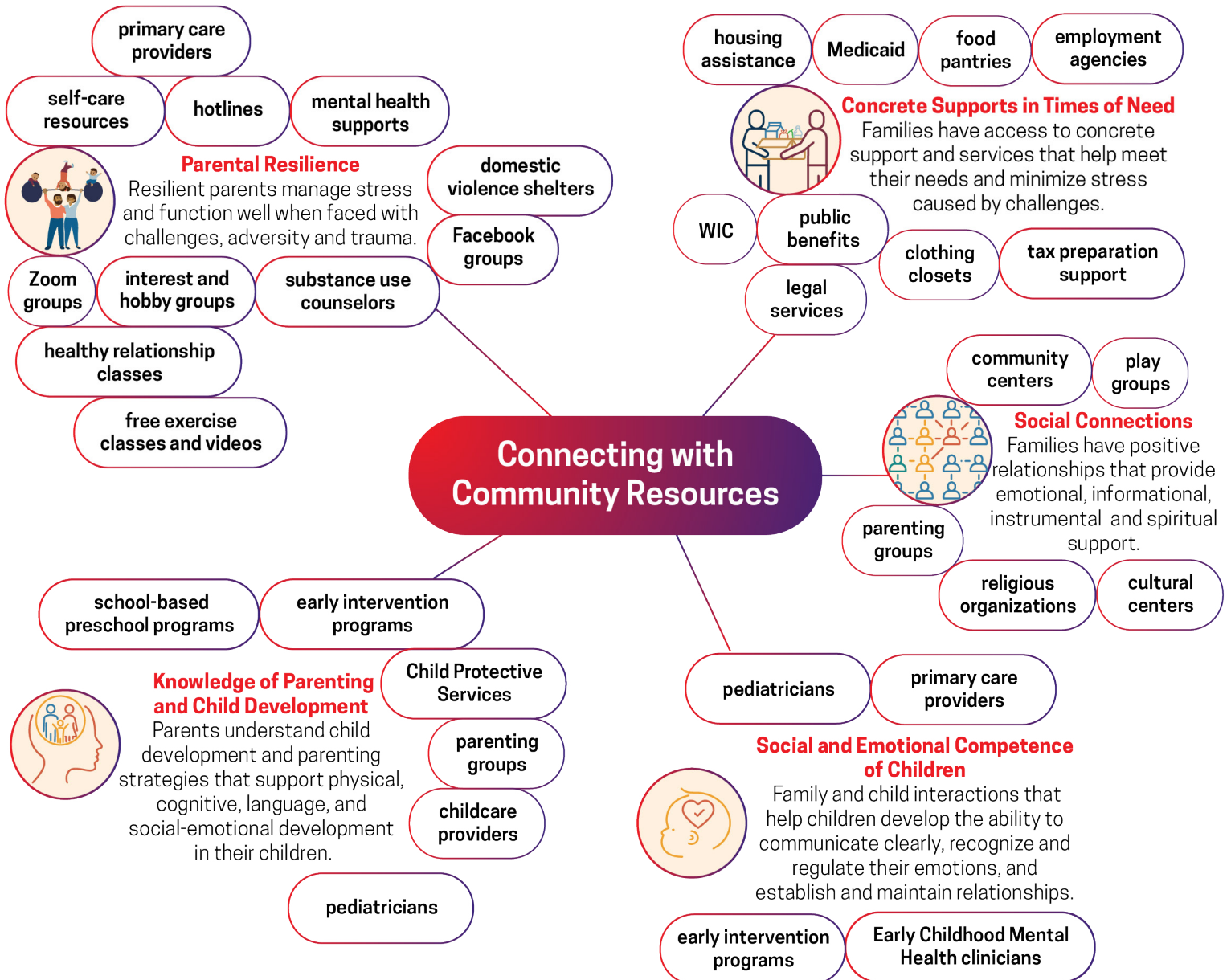


Virtual Home Visiting 106: Supporting Families Virtually

The Strengthening Families™ Protective Factors Framework identifies five family strengths that support parents to provide the best outcomes for their children. The framework can help you identify community and online resources that support families to meet their needs and reach for their goals and dreams.



Resources

- 2-1-1 - [Website](#)
- Google Earth - [Website](#)
- Google Maps - [Website](#)
- Core Meanings of the Strengthening Families Protective Factors, Center for the Study of Social Policy - [Handout](#)

Module Resources:

- Learning Guide - [Handout](#)
- Community Mapping Tool Template - [Handout](#)
- Questions to Ask Referral Sources - [Handout](#)
- Virtual Vitality Videos and Handouts
 - Centering Practice, “I am Here, I have Arrived” - [Video](#) and [Handout](#)
 - Sensory Scan 3-2-1 - [Video](#) and [Handout](#)
 - 3-2-1 Remix - [Video](#) and [Handout](#)